

ネットワークという巨大な生命を育む、次世代の情報セキュリティへ。

情報セキュリティ大学院大学

4th Japan & US Computer Crime & Security Survey

Katsuya Uchida

Professor, Ph. D.

Institute of Information Security

uchida@iisec.ac.jp

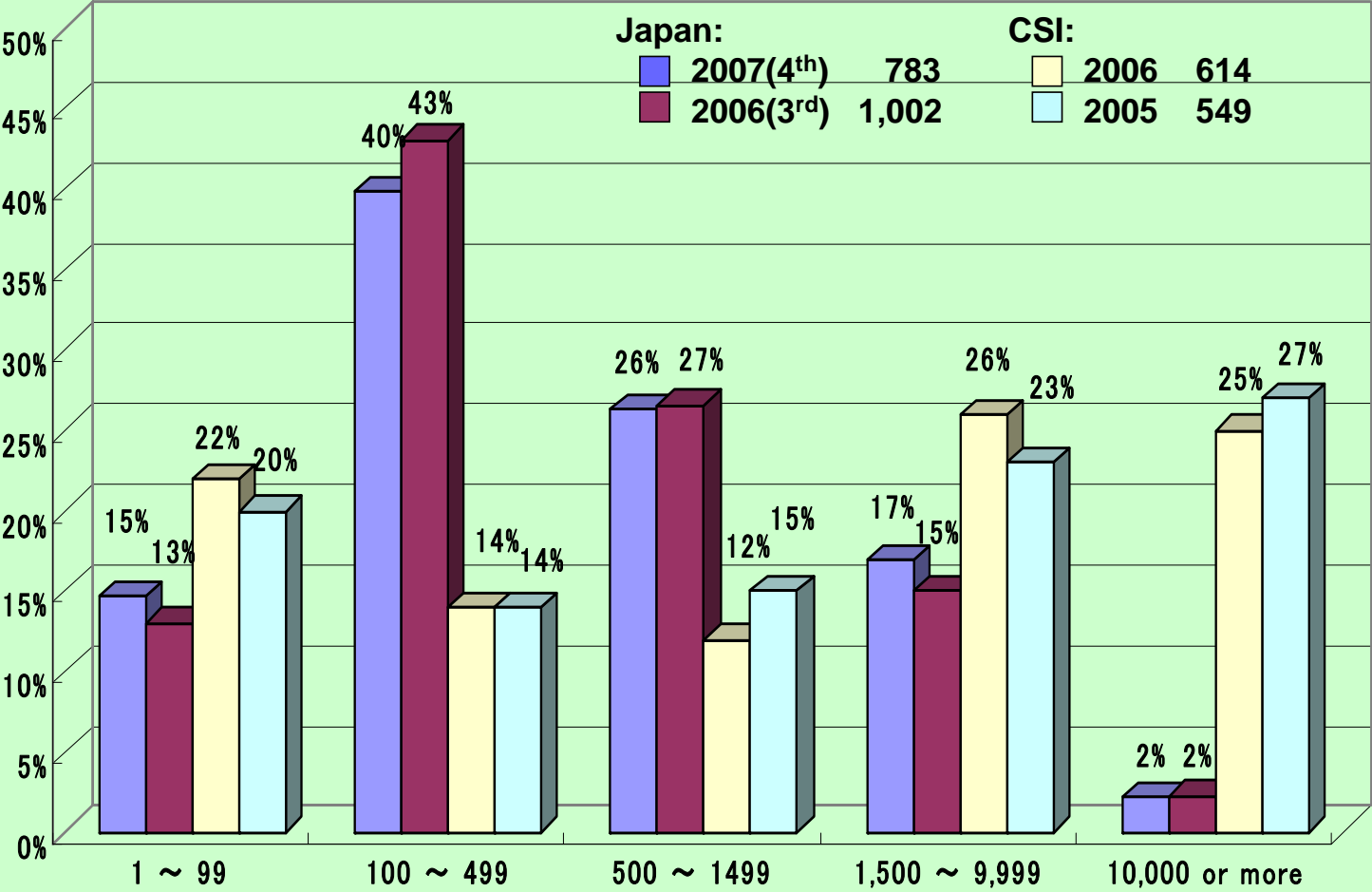


INSTITUTE of INFORMATION SECURITY

Graduate School of Information Security

of Information Security (Japan)

Respondents by Number of Employees



Katusya Uchida, Ph. D. Professor, Institute of Information Security (Japan)

Respondents by Industry Sector

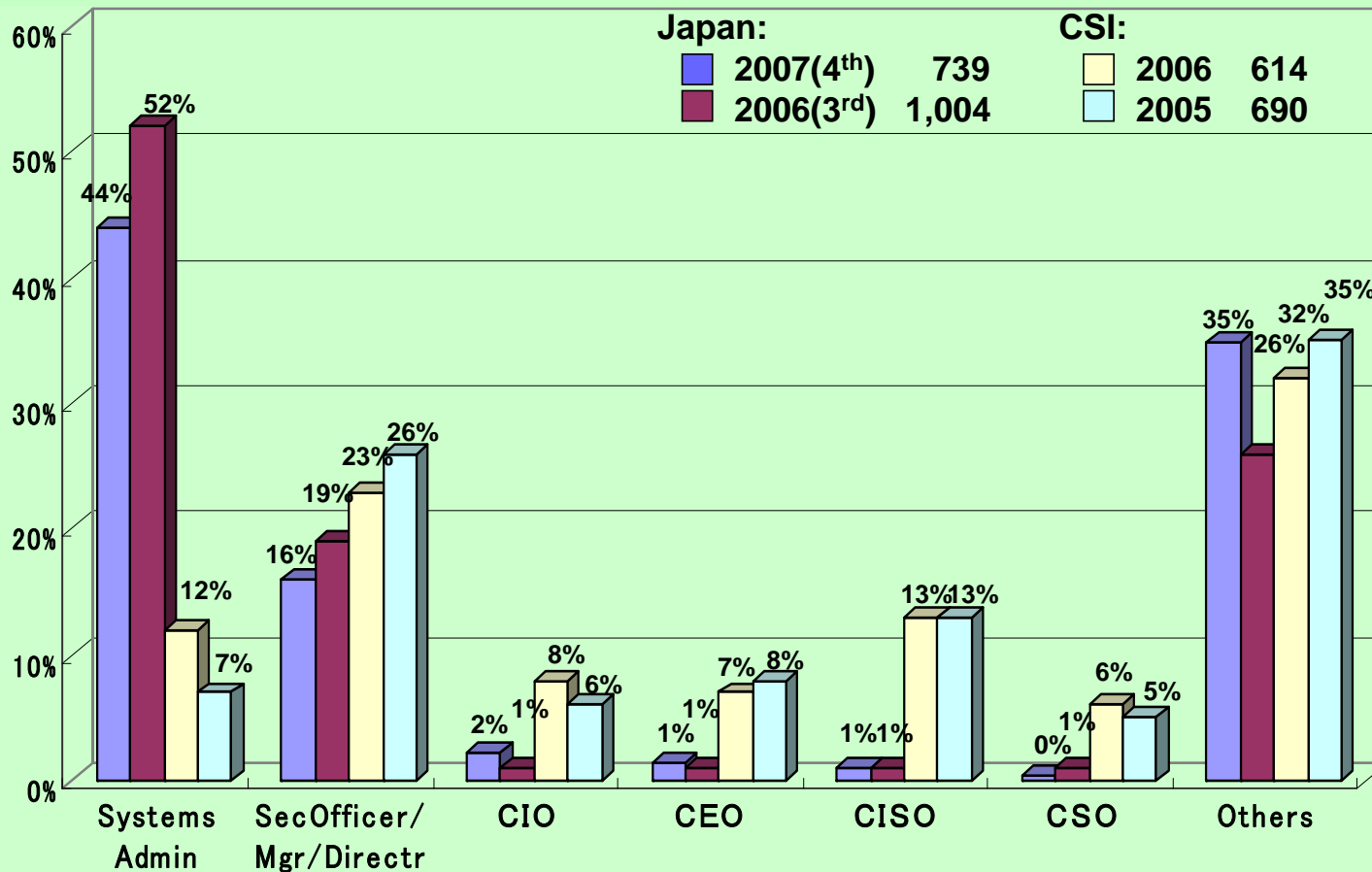
| C S I | | | JAPAN | | |
|----------------------|------|------|-------------------|------|------|
| Industry Sector | 2006 | 2005 | Industry Sector | 2007 | 2006 |
| Financial | 17% | 17% | Manufacturing | 27% | 34% |
| High-Tech/Info. Tech | 11% | 15% | Retail | 15% | 14% |
| Manufacturing | 9% | 9% | Educational | 13% | 12% |
| Federal Government | 8% | 9% | Government | 13% | 5% |
| Medical | 7% | 7% | Construction | 7% | 8% |
| Educational | 8% | 6% | Telecommunication | 7% | 7% |
| State Government | 3% | 5% | Complex retail | 3% | 5% |
| Telecommunication | 4% | 4% | Transportation | 3% | 3% |
| Utilities | 3% | 4% | Financial | 3% | 2% |
| Local Government | 3% | 2% | Real estate | 2% | 2% |
| Transportation | 1% | 1% | Food / Hotel | 1% | 1% |
| Retail | 1% | 1% | Medical / Welfare | 1% | 1% |
| Legal | 1% | 1% | High-tech | 1% | 1% |
| Consulting | 14% | - | Utilities | 0% | 0% |
| Others | 11% | 19% | Others | 6% | 6% |

Respondents: CSI: 2006=615, 2005= 699

Japan: 2007=782, 2006=1,004

Katusya Uchida, Ph. D. Professor, Institute of Information Security (Japan)

Respondents by Job Description

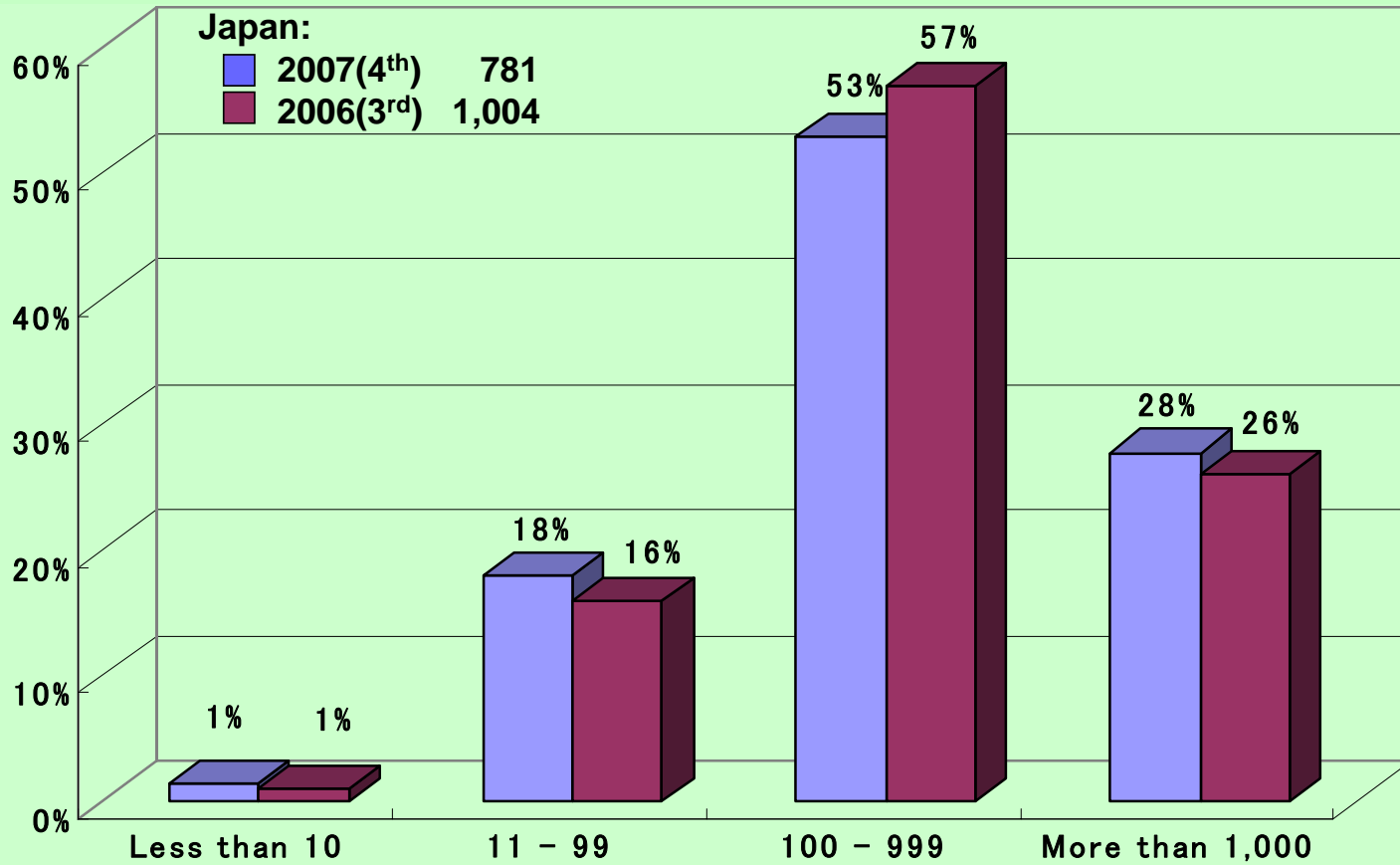


Respondents: CSI: 2006=615, 2005= 690

Japan: 2007=739, 2006=1,004

Katusya Uchida, Ph. D. Professor, Institute of Information Security (Japan)

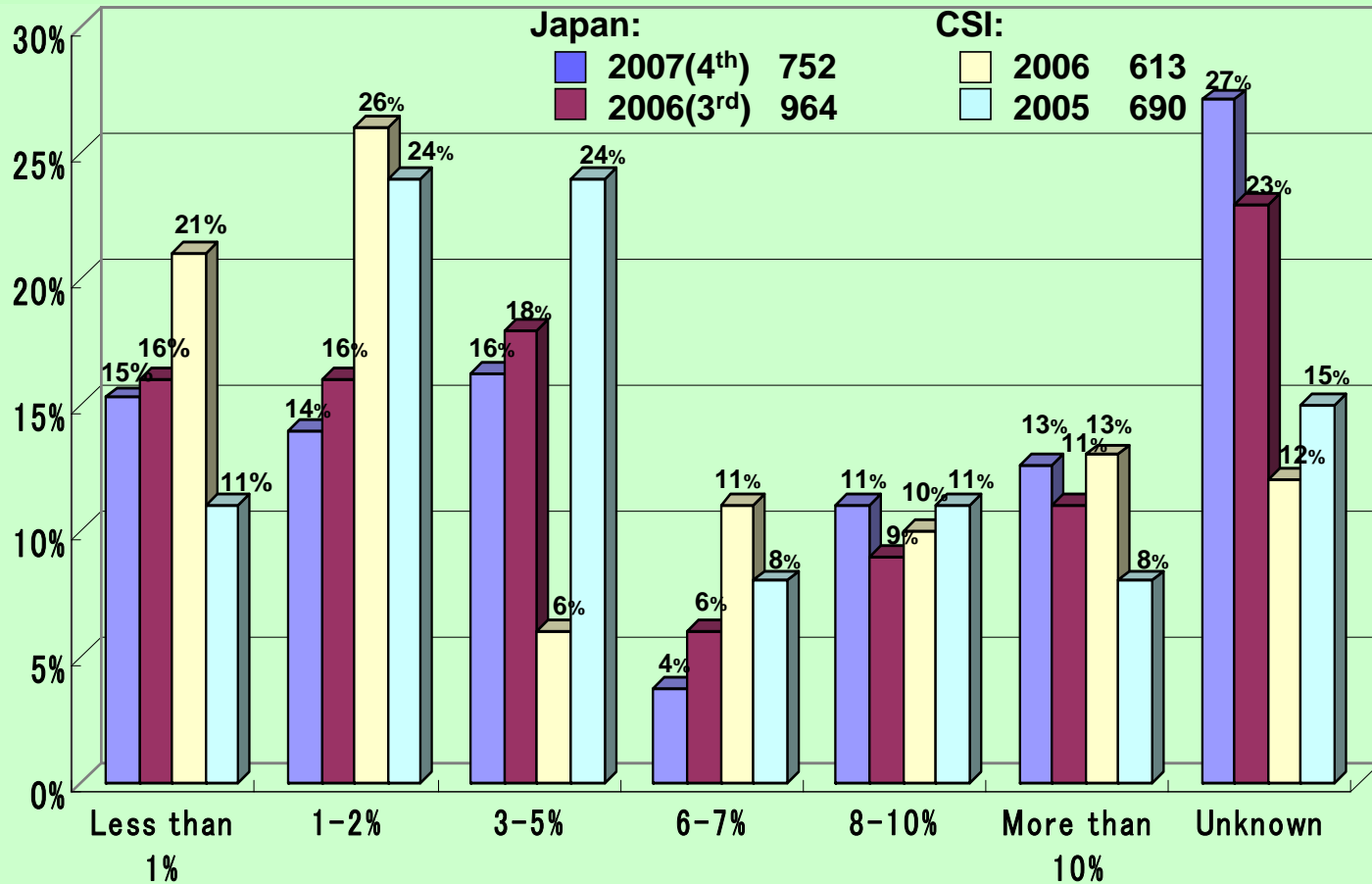
Number of PCs



Respondents: Japan: 2007=781 2006=1,004

Katusya Uchida, Ph. D. Professor, Institute of Information Security (Japan)

Percentage of IT Budget Spent on Security

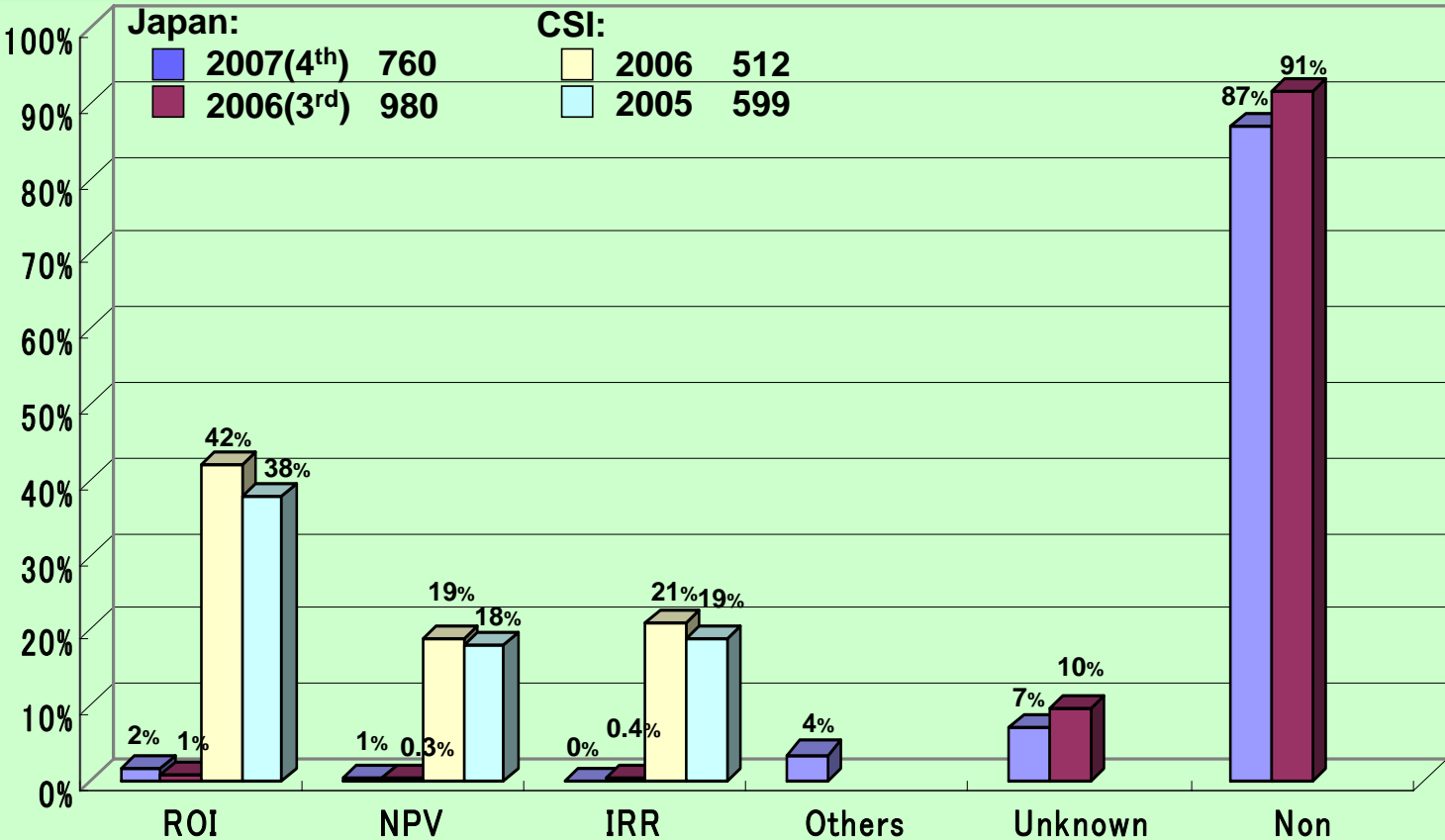


Respondents: CSI: 2006=613, 2005= 690

Japan: 2007=752, 2006=964

Katusya Uchida, Ph. D. Professor, Institute of Information Security (Japan)

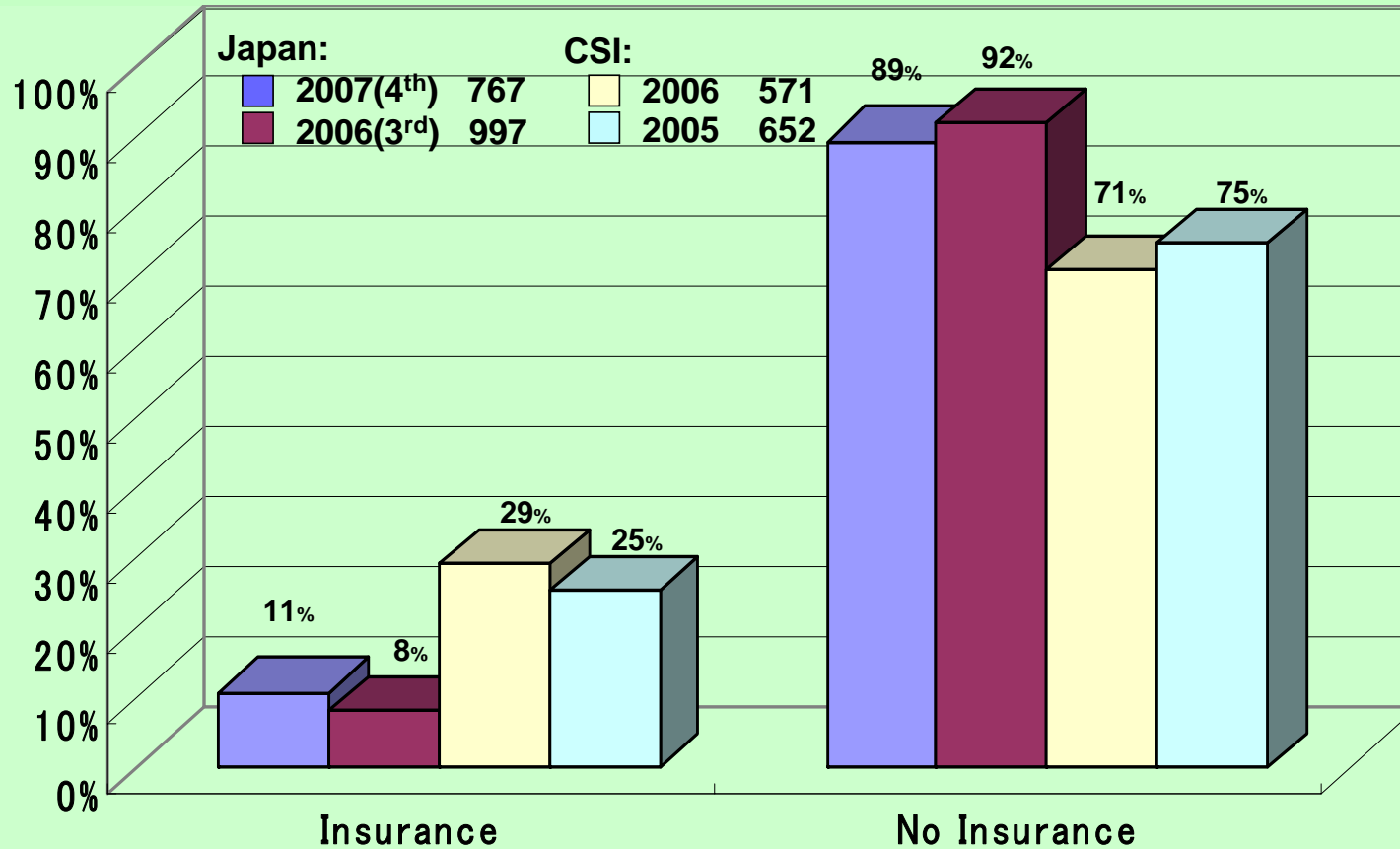
Percentage of Organizations Using ROI, NPV and IRR Metrics



Respondents: CSI: 2006=512, 2005= 599 Japan: 2007=760, 2006=980

Katusya Uchida, Ph. D. Professor, Institute of Information Security (Japan)

Organizations with External Insurance Against Cybersecurity Risks

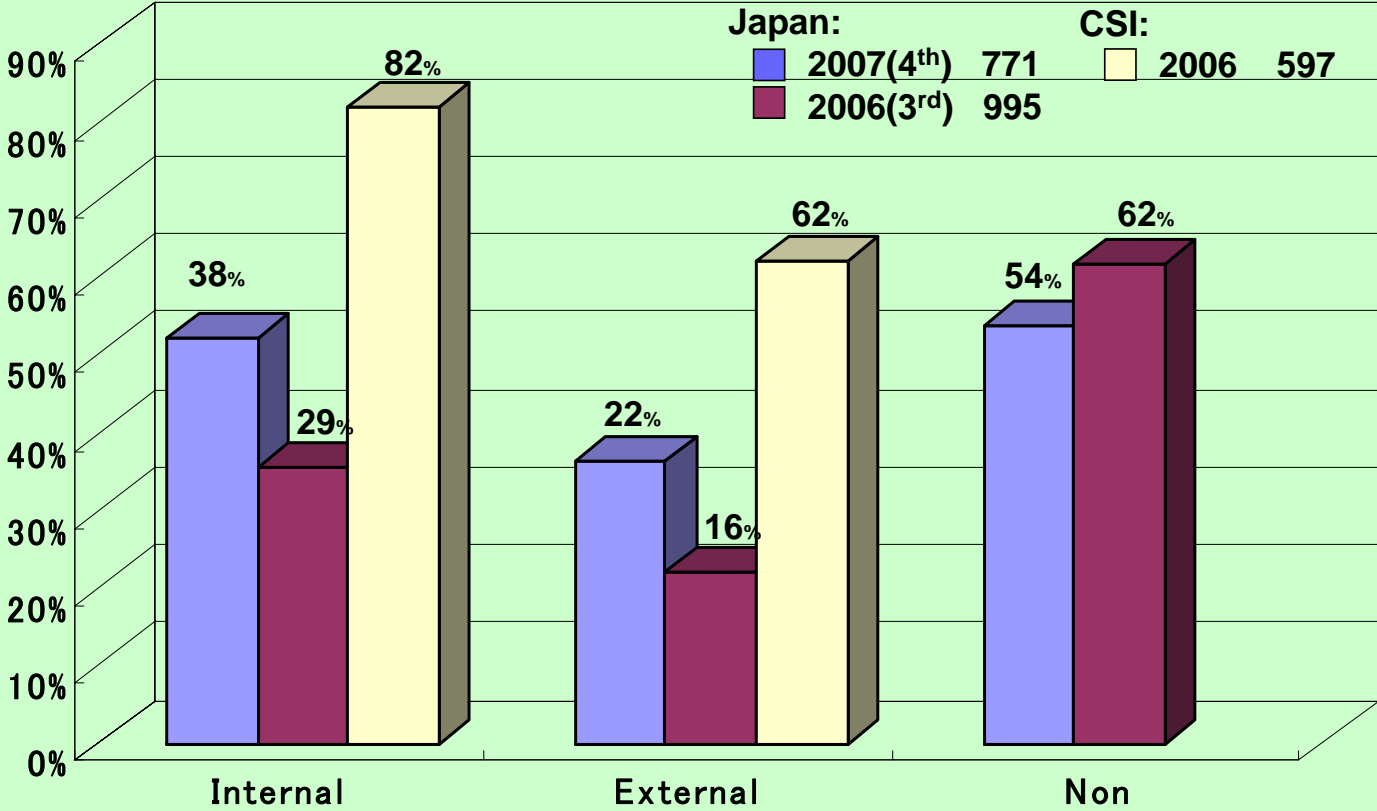


Respondents: CSI: 2006=571, 2005= 652

Japan: 2007=767, 2006=997

Katusya Uchida, Ph. D. Professor, Institute of Information Security (Japan)

Organizations Conducting Security Audits

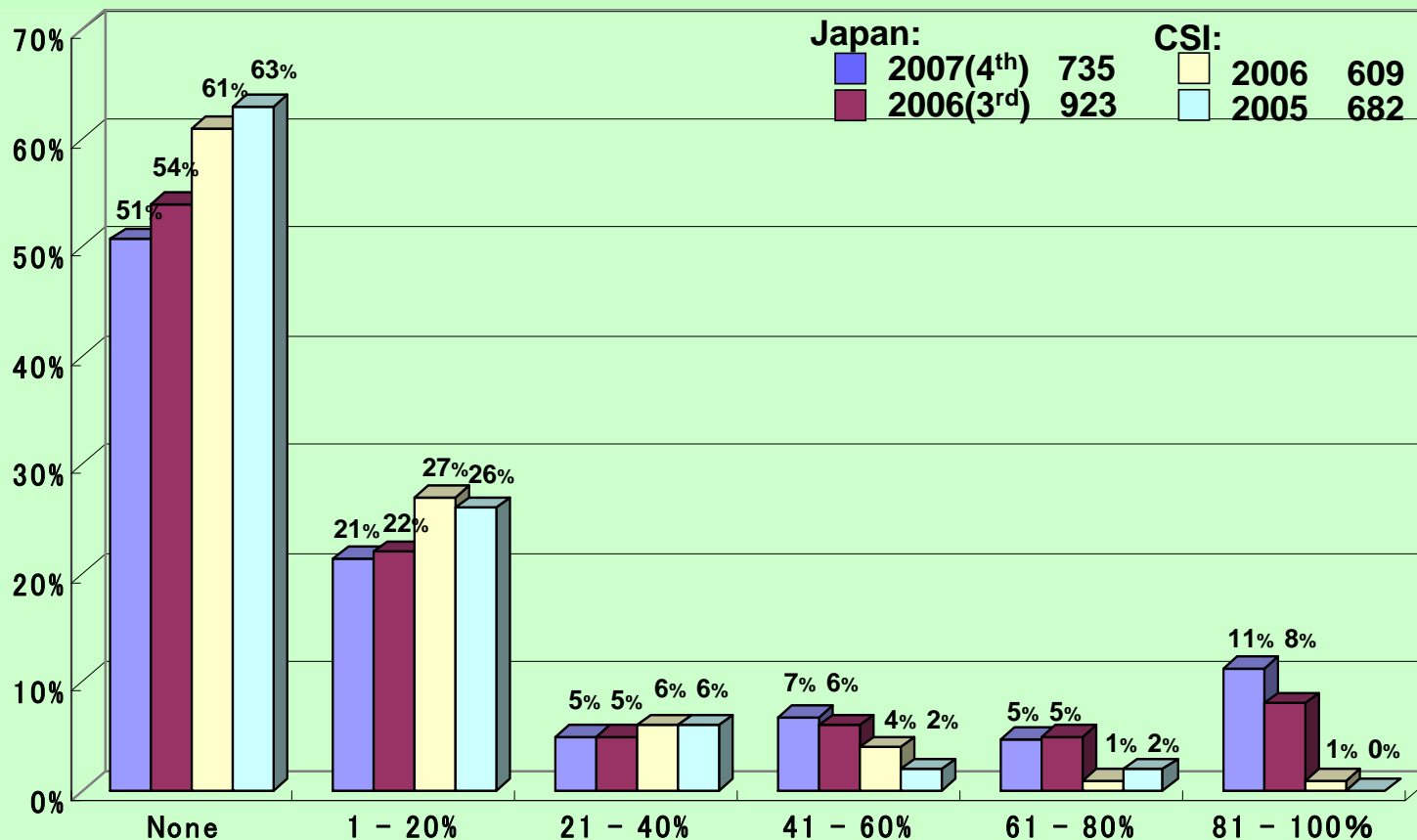


Respondents: CSI: 2006=597

Japan: 2007=771, 2006=995

Katusya Uchida, Ph. D. Professor, Institute of Information Security (Japan)

Percentage of Security Function Outsourced



Respondents: CSI: 2006=609, 2005= 682

Japan: 2007=735, 2006=923

Katusya Uchida, Ph. D. Professor, Institute of Information Security (Japan)

Security Technologies Used

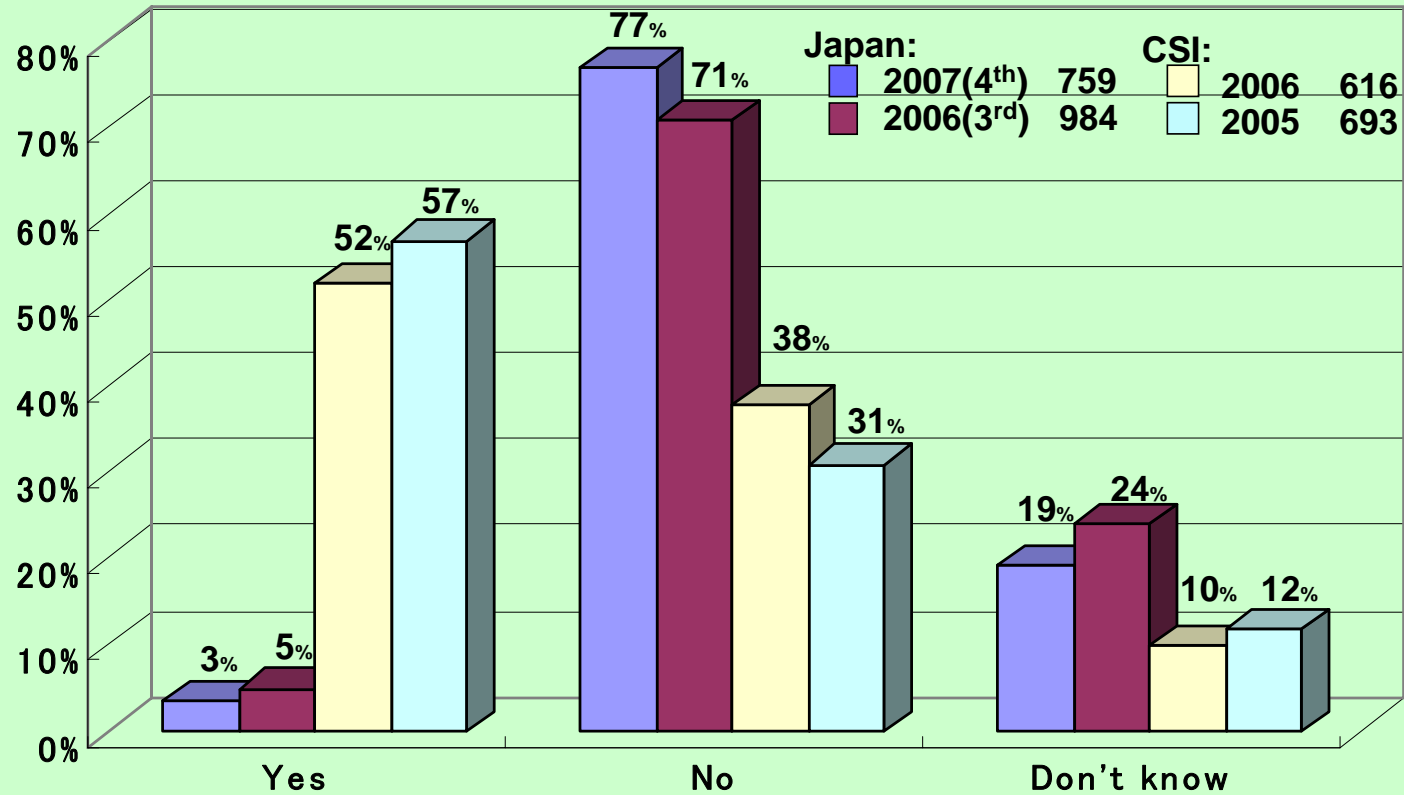
| | CSI | | JPN | |
|--|------|------|------|------|
| | 2006 | 2005 | 2007 | 2006 |
| Anti-Virus Software | 97% | 96% | 95% | 94% |
| Firewall | 98% | 97% | 92% | 91% |
| Reusable account/login passwords | 46% | 52% | 82% | 83% |
| Server-based Access Control Lists | 70% | 70% | 69% | 75% |
| Anti-Spyware | 79% | | 47% | |
| Log Management Software | 41% | | 37% | |
| Encryption for data in transit | 63% | 68% | 35% | 32% |
| Intrusion Detection System : IDS | 69% | 72% | 24% | 21% |
| Encryption for data in Storage | 48% | 46% | 19% | 27% |
| Smart cards/Other one-time password tokens | 38% | 42% | 18% | 15% |
| One time passwords | | | 8% | 11% |
| Application-level Firewall | 39% | | 17% | - |
| Intrusion Prevention System : IPS | 43% | 35% | 15% | 10% |
| Specialized wireless security system | 32% | | 12% | - |
| Public Key Infrastructure | 36% | 35% | 9% | 10% |
| Biometrics | 20% | 15% | 9% | 9% |
| Forensics tools | 38% | | 2% | - |
| Endpoint security client software | 31% | - | - | - |
| Others | 4% | - | 4% | 5% |

Respondents: CSI: 2006=616, 2005= 687

Japan: 2007=769, 2006=987

Katusya Uchida, Ph. D. Professor, Institute of Information Security (Japan)

Unauthorized Use of Computer Systems within the Last 12 Months



Respondents: CSI: 2006=616, 2005=693

Japan: 2007=759, 2006=984

Katsuya Uchida, Ph. D. Professor, Institute of Information Security (Japan)

Types of Attacks or Misuse Detected in the Last 12 Months

| | C S I | | | Japan | | |
|------------------------------------|-------|----|------|-------|----|------|
| | 2006 | | 2005 | 2007 | | 2006 |
| Virus | 65% | 1 | 32 % | 84 % | 1 | 67 % |
| Laptop/Mobile Theft | 47% | 2 | 75 % | 30 % | 2 | 23 % |
| Insider Abuse of Net Access | 42% | 3 | 9 % | 22 % | 3 | 18 % |
| Denial of Service | 25% | 5 | 48 % | 14 % | 4 | 11 % |
| Unauthorized access to Information | 32 % | 4 | 32 % | 5 % | 5 | 5 % |
| Web Site Defacement | 6 % | 12 | 5 % | 5 % | 6 | - |
| System Penetration | 15 % | 6 | 10 % | 4 % | 7 | 4 % |
| Theft of Proprietary Information | 9 % | 8 | 2 % | 3 % | 8 | 2 % |
| Sabotage | 3 % | 13 | 7 % | 2 % | 9 | 1 % |
| Abuse of Wireless Network | 14 % | 7 | 16 % | 2 % | 10 | 3 % |
| Telecom fraud | 8 % | 10 | 48 % | 1 % | 11 | 0 % |
| Financial fraud | 9 % | 9 | 7 % | 0 % | 12 | 0 % |
| Misuse of Public Web Application | 6 % | 11 | 5 % | | 13 | 3 % |
| Other | - | | - | 4 % | | 2 % |
| No attack / Misuse | - | | - | 43 % | | 23 % |

Note: Percentages of CSI 2005 is calculated from Fig. 14 in 2005 CSI/FBI survey

Respondents: CSI: 2006=616, 2005=700 Japan: 2007=533, 2006=984

Katusya Uchida, Ph. D. Professor, Institute of Information Security (Japan)

How Many Incidents? From the Outside? From the Inside?

| | | | 1 - 5 | 6 - 10 | 11 - 30 | 31 - | Don't Know | None |
|-------|---------|------|-------|--------|---------|------|------------|------|
| CSI | Inside | 2005 | 46 % | 7 % | 3 % | | 44 % | - |
| | Outside | 2005 | 47 % | 10 % | 8 % | | 35 % | - |
| | 2006 | | 48 % | 15 % | 9 % | | 28 % | - |
| Japan | Inside | 2007 | 19 % | 3 % | 1 % | 0 % | 12 % | 65 % |
| | | 2006 | 31 % | 3 % | 1 % | 1 % | 12 % | 52 % |
| | Outside | 2007 | 30 % | 2 % | 2 % | 1 % | 10 % | 56 % |
| | | 2006 | 42 % | 4 % | 3 % | 1 % | 9 % | 41 % |

Respondents: CSI: 2006=341, 2005=453 Japan: 2007=686, 2006=887

Dollar Amount Losses by Type

Unit: \$(=¥100)

| | CSI | | | Japan | | |
|-------------------------------|-------------------|----|--------------------|------------------|----|-------------------|
| | 2006 | | 2005 | 2007 | | 2006 |
| Virus | 15,691,460 | 1 | 42,787,767 | 2,916,042 | 1 | 5,029,847 |
| Laptop Theft | 6,642,660 | 3 | 4,107,300 | 636,707 | 2 | 3,769,338 |
| Telecom Fraud | 1,262,410 | 8 | 242,000 | 509,960 | 3 | 20,000 |
| Theft of proprietary Info | 6,034,000 | 4 | 30,933,000 | 229,260 | 4 | 230,382 |
| Insider Net Abuse | 1,849,810 | 7 | 6,856,450 | 224,178 | 5 | 579,987 |
| Unauthorized Access | 10,617,000 | 2 | 31,233,100 | 222,637 | 6 | 213,200 |
| Denial of Service | 2,922,000 | 5 | 7,310,725 | 140,202 | 7 | 258,132 |
| Bots within the organ. | 923,700 | 9 | - | 108,860 | 8 | - |
| Financial Fraud | 2,556,900 | 6 | 2,565,000 | 100,160 | 9 | 50,000 |
| System Penetration | 758,000 | 10 | 841,400 | 35,260 | 10 | 64,310 |
| Web site defacement | 162,500 | 16 | 115,000 | 27,552 | 11 | 38,585 |
| Sabotage | 260,000 | 15 | 340,600 | 20,160 | 12 | 12,200 |
| Password sniffing | 161,210 | 17 | - | 17,460 | 13 | - |
| Phishing in which your org. | 647,510 | 11 | - | 5,010 | 14 | - |
| Abuse of wireless net | 469,010 | 12 | 544,700 | 1,160 | 15 | 11,300 |
| Exploit of DNS Server | 90,100 | 18 | - | 360 | 16 | - |
| Instant Msg misuse | 291,510 | 13 | - | 160 | 17 | - |
| Misuse of public Web App | 269,500 | 14 | 2,227,500 | - | | 12,100 |
| Other | 885,000 | | | 113,800 | | 1,231,160 |
| Total Losses | 52,494,290 | | 130,104,542 | 5,308,928 | | 11,520,541 |
| Average of Losses/Resp | 167,713 | | 203,606 | 21,581 | | 53,335 |

Respondents: CSI: 2006=313, 2005=639 Japan: 2007=246, 2006=216

Katusya Uchida, Ph. D. Professor, Institute of Information Security (Japan)